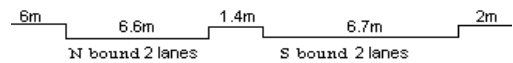
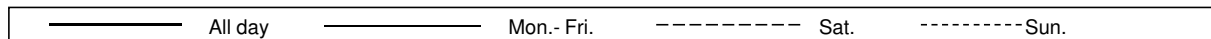
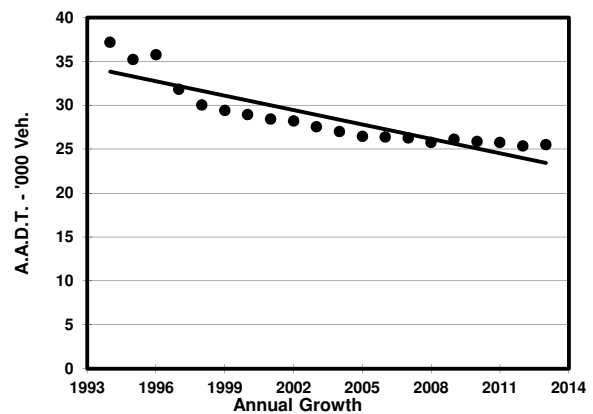
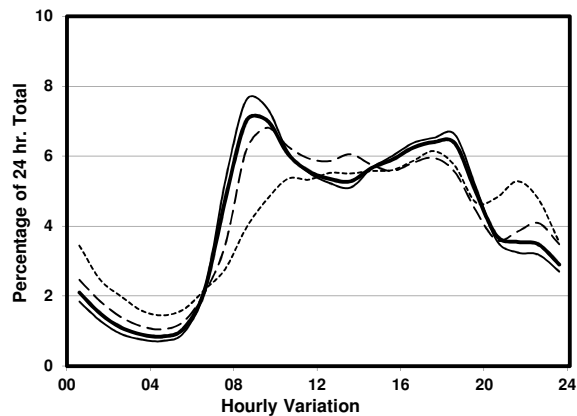
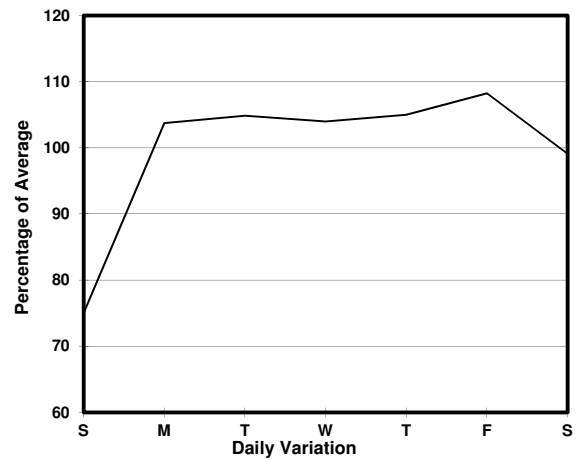
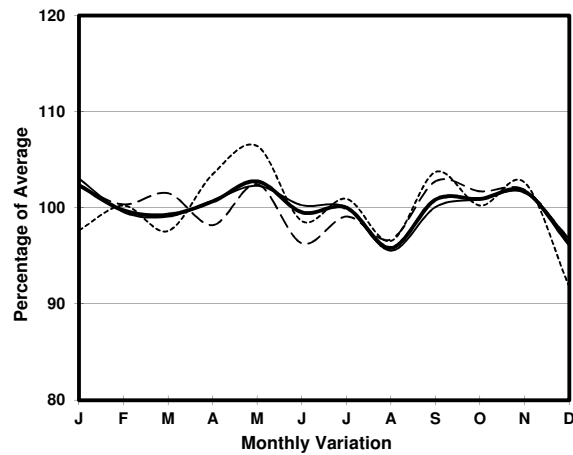


YEAR

2013

LINK CASTLE PEAK RD - KWAI CHUNG (from TAI WO INT to
WO YI HOP RD)CORE STATION
ROAD NETWORK
ROAD TYPE5004
MAJOR
PRIMARY DISTRIBUTOR

1. TRAFFIC FLOW VARIATION AND GROWTH



2. TRAFFIC CHARACTERISTICS (BY DIRECTION)

Parameter	All - Day	Mon. - Fri.	Sat.	Sun.
SOUTH BOUND				
A.A.D.T.	12380	13040	12670	9960
R 12 / 24 - %	70.5	72.3	68	61.7
R 16 / 24 - %	86.8	88	84.7	81.5
AM Peak Hour	0800-0900	0800-0900	0900-1000	0900-1000
One-way flow at AM peak hour	870	1000	830	470
T - % (AM)	-	-	-	-
PM Peak Hour	1800-1900	1800-1900	1700-1800	1700-1800
One-way flow at PM peak hour	810	890	730	600
T - % (PM)	-	-	-	-
Prop.of commercial vehicles - 16 hr.	-	-	-	-
NORTH BOUND				
A.A.D.T.	13140	14180	12940	9430
R 12 / 24 - %	72.8	74.6	70.5	62.6
R 16 / 24 - %	88	89.3	85.8	82
AM Peak Hour	0900-1000	0900-1000	0900-1000	0900-1000
One-way flow at AM peak hour	970	1100	920	460
T - % (AM)	-	-	-	-
PM Peak Hour	1700-1800	1700-1800	1700-1800	1700-1800
One-way flow at PM peak hour	870	960	790	590
T - % (PM)	-	-	-	-
Prop.of commercial vehicles - 16 hr.	-	-	-	-

3. OTHER INFORMATION AND COMMENT